

Recognising risk factors in patients – risk assessment and day surgery

Gill Lowe

University Hospitals Birmingham

5th May 2016

Declarations

- Honoraria (advisory committee) and educational grant to attend meeting: Bayer PLC

VTE facts and figures

- Estimated to kill in excess of 25000 patients per year
- Commonest cause of hospital mortality
- Mortality rate around 30% untreated, falls to 2-8% with appropriate treatment

- Direct and indirect costs estimated at £640 million in 2005

- 2007 CMO recommendation – Individualised risk assessment for each hospital in patient
 - Adopted by one third of acute trusts when audited in same year

<http://www.publications.parliament.uk/pa/cm200405/cmselect/cmhealth/99/99.pdf>

<http://www.publications.parliament.uk/pa/cm200708/cmselect/cmhealth/1137/1137we16.htm#note127>

Risk assessment

- Risk assessment and use of thromboprophylaxis proven to reduce mortality (Collins R et al New England Journal of Medicine; 318: 18, 1162-73)
- Previous concerns related to inconsistent risk assessments and prescription of thromboprophylaxis following risk assessment (Rashid ST et al Journal of the Royal Society of Medicine 98 (11): 507–12)
- Currently nationally mandated quality requirement, including root cause analysis of all hospital acquired venous thromboembolic events (previous CQUIN)
- NICE guidance 2010 (CG92) – Venous thromboembolism: Reducing the risk for patients in hospital (addendum in 2015)

CG92 recommendations – VTE and Bleeding Risks

- Assess all patients on admission
- For medical patients, regard as increased risk if mobility significantly reduced for three days or more, or if they are expected to have ongoing reduced mobility and have an additional risk factor (see next slide)
- For surgical / trauma patients, regard as increased risk if:
 - They have one or more identified risk factors (see next slide)
 - Expected significant reduction in mobility
 - Acute surgical admission with inflammatory or intra-abdominal condition
 - Surgical procedure with a total anaesthetic and surgical time of more than 90 minutes, or 60 minutes if the surgery involves the pelvis or lower limb

Box 1 Risk factors for VTE

- Active cancer or cancer treatment
- Age over 60 years
- Critical care admission
- Dehydration
- Known thrombophilias
- Obesity (body mass index [BMI] over 30 kg/m²)
- One or more significant medical comorbidities (for example: heart disease; metabolic, endocrine or respiratory pathologies; acute infectious diseases; inflammatory conditions)
- Personal history or first-degree relative with a history of VTE
- Use of hormone replacement therapy
- Use of oestrogen-containing contraceptive therapy
- Varicose veins with phlebitis

For women who are pregnant or have given birth within the previous 6 weeks see [recommendations 1.6.4–1.6.6](#).

CG92 recommendations – VTE and Bleeding Risks

- Assess bleeding risk in all patients
- Do not offer thromboprophylaxis to patients with any of the identified bleeding risks, unless the risk of VTE outweighs the risk of bleeding
- Reassess patients' risk of bleeding and thrombosis within 24 hours of admission, and whenever the clinical situation changes

Box 2 Risk factors for bleeding

- Active bleeding
- Acquired bleeding disorders (such as acute liver failure)
- Concurrent use of anticoagulants known to increase the risk of bleeding (such as warfarin with international normalised ratio [INR] higher than 2)
- Lumbar puncture/epidural/spinal anaesthesia expected within the next 12 hours
- Lumbar puncture/epidural/spinal anaesthesia within the previous 4 hours
- Acute stroke
- Thrombocytopenia (platelets less than $75 \times 10^9/l$)
- Uncontrolled systolic hypertension (230/120 mmHg or higher)
- Untreated inherited bleeding disorders (such as haemophilia and von Willebrand's disease)

CG92 recommendations – Minimise VTE risks

- Do not allow patients to become dehydrated
- Encourage early mobilisation
- Antiplatelet agents are inadequate VTE prophylaxis
- Consider use of IVC filters in those at very high risk of thrombosis in whom mechanical and pharmacological prophylaxis is contraindicated

Example risk assessment

Pat No	Pat List	Pat Srch	Bed	DNACPR/TEAL	Hand Over	Old Episode	Inpatient 15/04/2016 -- 28/04/2016	Confirm patient identity	Dep	S				
Pat Admin	Procedures	Requests	Forms	Labs	Flowsheet	Observations	Assessments	CCMDS	ICU Notes	Classify	Drug Round	Prescription	Drug Chart	Alert L
Demographics	Admission	Pre-Admit	Classify	Comorbidities	Allergies	Clinical details	Thrombosis	Dementia	Discharge Letters	Handover Notes				
Assessment type:	Surgical													
Proceed/Postponed:	Proceed to full assessment													
Type of surgery:	Renal													
Obesity (Estimated BMI > 30kg/m2):	No				Thrombophilia or family history of VTE:	No								
Surgery lasting >60 minutes:	Yes				Previous DVT/PE:	No								
Significantly reduced mobility for 3 days or more anticipated:	Yes				Active malignancy:	No								
Dehydration:	No				Varicose veins with phlebitis:	No								
Medical illness:	None													
Contraindications														
Compression stockings (AES):	None													
Enoxaparin:	None													
AES recommended. Enoxaparin not required.														

Recurrent issues

- Assessment of reduced mobility in medical inpatients
- Thromboprophylaxis failure becoming more prominent
- Delay in starting enoxaparin post admission
- Obtaining feedback from responsible medical team

Day case surgery

- Meta-analysis of 14 studies and just under 5000 patients – weighted rate of major VTE approx 3%, with two thirds risk reduction with use of thromboprophylaxis (Chapelle C et al [Arthroscopy](#). 2014 Aug;30(8):987-96)
- Canadian study of 1200 patients with lower limb immobilisation - <1% rate of symptomatic venous thromboembolism and no role for routine anticoagulant prophylaxis (Selby R et al [J Bone Joint Surg Am](#). 2014 May 21;96(10):e83)

Day case surgery

- Low risk procedures “block assessed” – other procedures require risk assessment
- Recommendations for enoxaparin prescription:
 - Ongoing significant immobility – especially after lower limb or abdominal surgery and additional risk factors for VTE
 - Previous VTE
 - On the Oestrogen containing contraceptive pill or oral HRT if not stopped
 - At discretion of surgeon or anaesthetist

Teenage girl died from blood clot after taking contraceptive pill

23:57, 20 JAN 2016 | **UPDATED** 23:57, 20 JAN 2016 | **BY** JON MACPHERSON

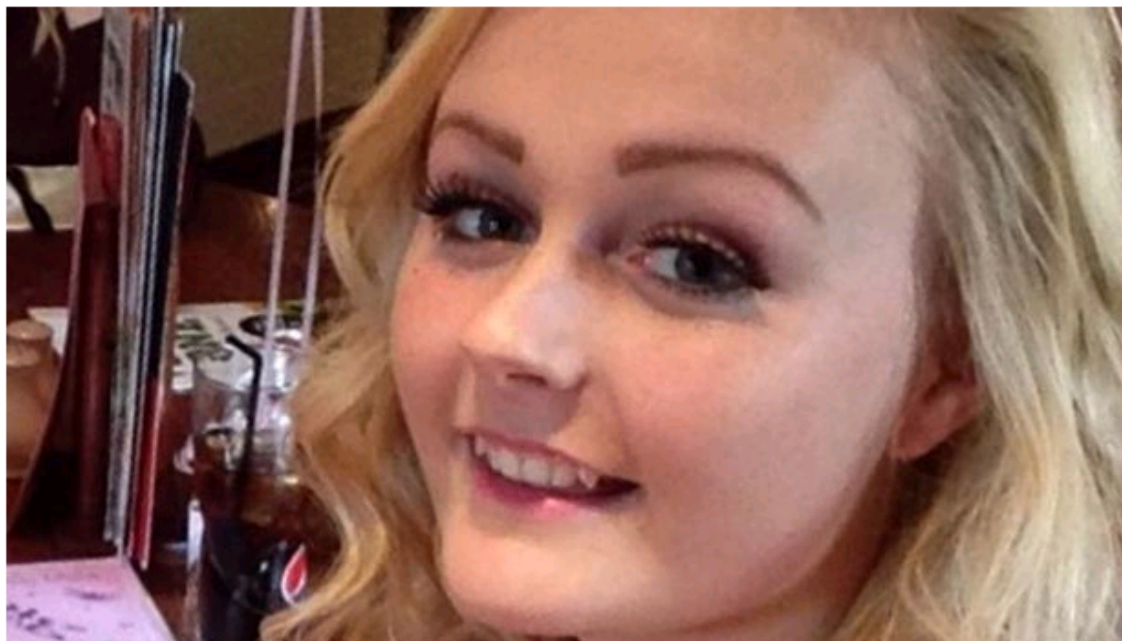
Sophie Murray, 16, died of a pulmonary embolism due to deep vein thrombosis caused in part by taking the oral contraceptive pill



SHARES

Enter your e-mail for our daily newsletter

Subscribe



★ Recommended In UK News



Most Read In News



1 **UFOS**
Mystery aircraft stuns onlookers after bizarre vapour trail leaves people stumped over what it was

2 **MELISSA REID**
Drugs mule teacher boasts she

Example cases

- Young female patient on contraceptive pill having day case arthroscopy
 - Presented with leg swelling on same side as procedure
 - Multiple attendances and delayed diagnosis
 - Subsequent PE and ongoing shortness of breath
- 65 year old man having day case glaucoma surgery who presented with VTE shortly afterwards
 - Not risk assessed as this procedure “low risk”
 - On questioning, had been advised to undertake posturing, and developed gastroenteritis and dehydration shortly afterwards

Results from national programme

- Increased percentage of risk assessed patients from 45% in 2010 to >95% in 2013
- Over this time period ONS data showed a reduction in VTE related deaths
- Significant reduction in hospital associated thrombosis observed following sustained achievement of >90% risk assessment at King's College Hospital
 - Associated significant fall in proportion of HAT attributable to inadequate thromboprophylaxis
 - Extrapolation of this data estimated 900 potential lives saved in England per year

<https://www.england.nhs.uk/wp-content/uploads/2014/02/rm-fs-10-3.pdf>

Roberts, LN et al *Chest*. 2013;144(4):1276-1281

Increasing awareness

- Risk assessment process
- Root cause analysis and seeking feedback
- Patient information leaflets and education from nursing team
- Video on bedside screens

Conclusions

- Venous thromboembolism (and bleeding risk) risk assessment is mandatory for all patients admitted to hospital
- Appropriate use of thromboprophylaxis following risk assessment has been proven to be life saving
- Documentation and audit trail are very important
- Mandatory assessment of VTE risk has reduced rates of hospital acquired thrombosis and increases prescription of thromboprophylaxis
- Root cause analyses help to identify learning points and refine process
- Universal thromboprophylaxis in day case surgery is controversial, but risk assessment should be undertaken with consideration of thromboprophylaxis in higher risk patients

Thank you